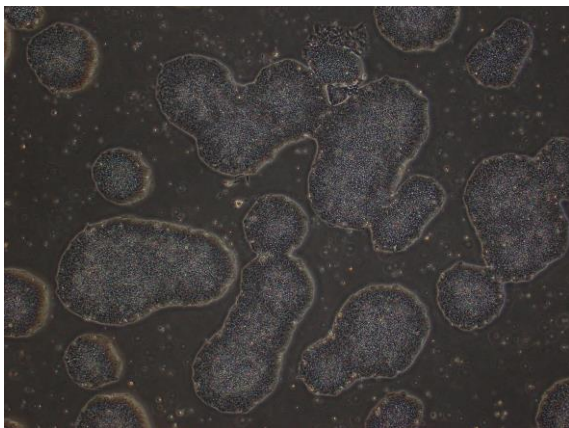
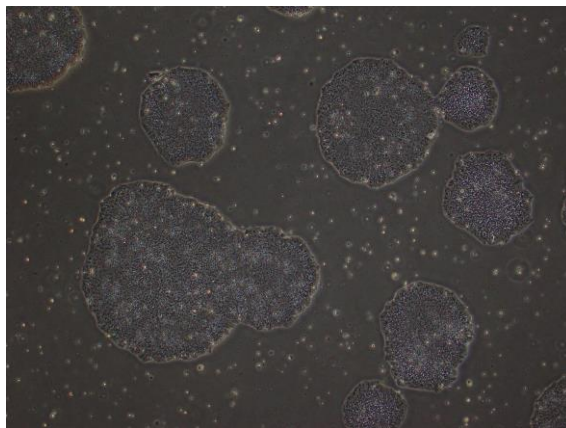


【 CiRA-j-1593 】 Morphology of iPSC colonies

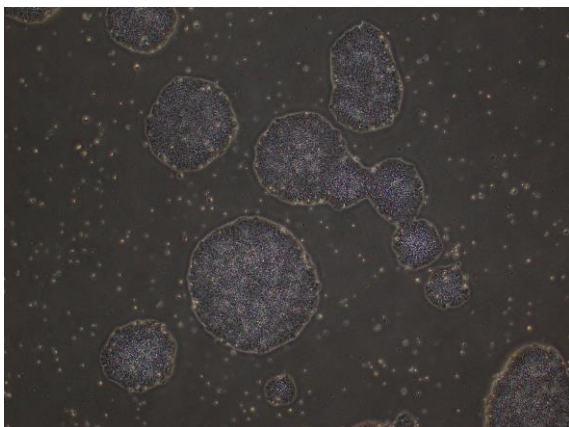
CiRA-j-1593-A: passage-3



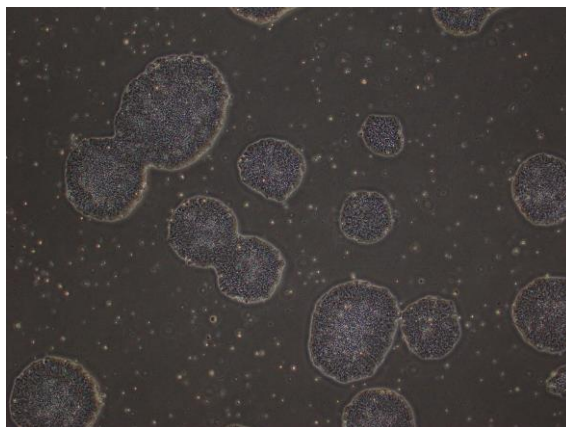
CiRA-j-1593-B: passage-3



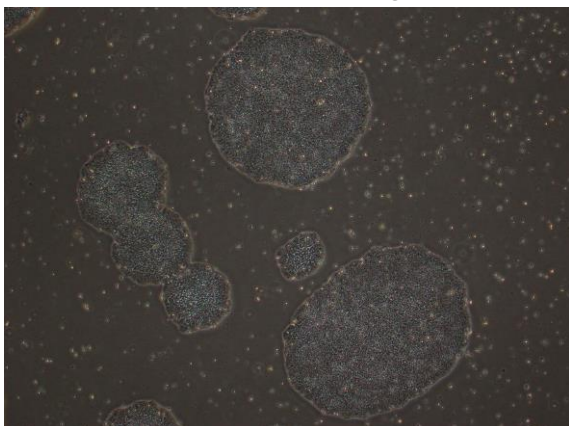
CiRA-j-1593-C: passage-3



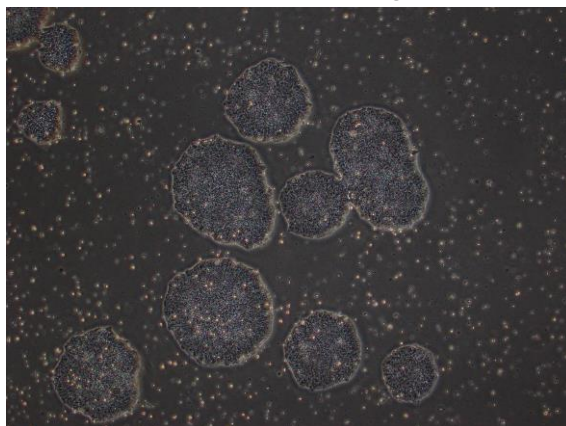
CiRA-j-1593-D: passage-3



CiRA-j-1593-E: passage-3



CiRA-j-1593-F: passage-3



(All images were captured at 4x magnification)